

Emily Ottinger, RA LEED GA

## PROFESSIONAL EXPERIENCE

April '16 | Present CBT Architects, Boston, MA- Staff Architect

- Worked on Government Center Garage One Congress Office Project and 350 Boylston Office Project.
- Worked in Repositioning and Academic departments on CD drawing sets for 1180 Boylston Condo Project, a 45 unit highend condo project, Pope Francis High School, a \$55 million cost K-8 new build school, Middlesex Theatre project, a 49,000 sf addition to an old theater building at the Middlesex School in Concord, MA, and Fessenden Squash Courts.
- Worked on schematic design for Newburyport residential and warehouse conversion and 99 Summer Street lobby branding project.

April '15 | April '16 MURPHY BURNHAM AND BUTTRICK, NY , NY- Designer

- PS19Q addition, Queens New York
- Responsible for project co-ordination in Revit
- Worked on design of school addition from schematic design through construction documents

Feb '14 | April '15 ANN BEHA ARCHITECTS, Boston , MA- Designer

- Bates College Dormitory, Lewiston Maine
- Responsible for project Revit model and coordination of consultant models
- Worked on design of exterior of dormitories from schematic design through construction documents

July '12 | Jan '14 STUDIOS ARCHITECTURE, Paris, France - Staff Architect

- Developed interior design concepts based on corporate client identities, programmatic requirements, and workplace
- Modeled existing building conditions in Revit with coordination of architect plans, MEP drawings, and on-site conditions
- Detailed interior spaces in Revit and Autocad in collaboration with subcontractors and material specialists
- Louis Vuitton Foundation for Creation, Paris, France - Frank Gehry designed 6,000 m<sup>2</sup> Contemporary Arts Center
- Responsible for preparing visual materials for client to understand options with respect to Gehry Partners design intentions, site conditions, and budgetary constraints
- Coordinated lighting and mechanical plans using Digital Project model and advice from on-site consultants

## EDUCATION

July '07|May '11 YALE SCHOOL OF ARCHITECTURE, New Haven, CT - Master of Architecture I

- Advanced Studios taken with Tod Williams and Billie Tsien and Emmanuel Petit
- Published in Retrospecta for work done in seminars given by Keller Easterling and Kent Bloomer

Sept '03|Dec '06 WELLESLEY COLLEGE, Wellesley, MA - Graduated Cum Laude with Bachelor of Arts in Architecture

- Coursework in Architecture: Massachusetts Institute of Technology Architecture Studios, Columbia University GSAPP, Shape of Two Cities: New York/Paris Program

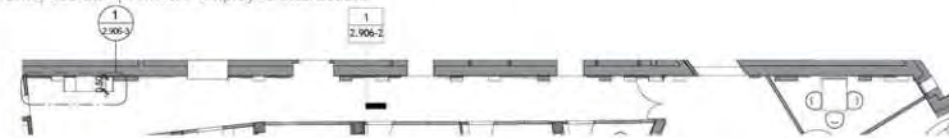
## SKILLS COMPUTER SKILLS:

Revit 2019, Revit BIM 360, AutoCad 2020, Adobe Suite, Bluebeam, Nscape, Rhino, SketchUp, Maya, Generative Components, Processing (Java Script), various fabrication techniques such as CNC milling and 3D printing

LANGUAGES: English and French

eottinge@gmail.com | 172 R Harvard Street, Cambridge MA 02139 | 6176809825

The interior office outfit for a consulting firm in Paris, France includes a vegetal wall, cafe space, library, and occupied baquet wall that support the core working practices of Weave as an open and fluid workspace that promotes employee interaction.



3 MUR ANIME NORD  
1 104



MUR ANIME NORD



A PEZ

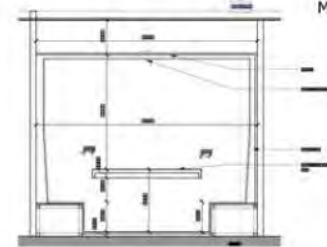
B MEDIUM LAQUE BLANC EP 30mm (41 simple module 5 double module)

C MEDIUM LAQUE BLANC EP 52mm (30 simple module 5 double module)

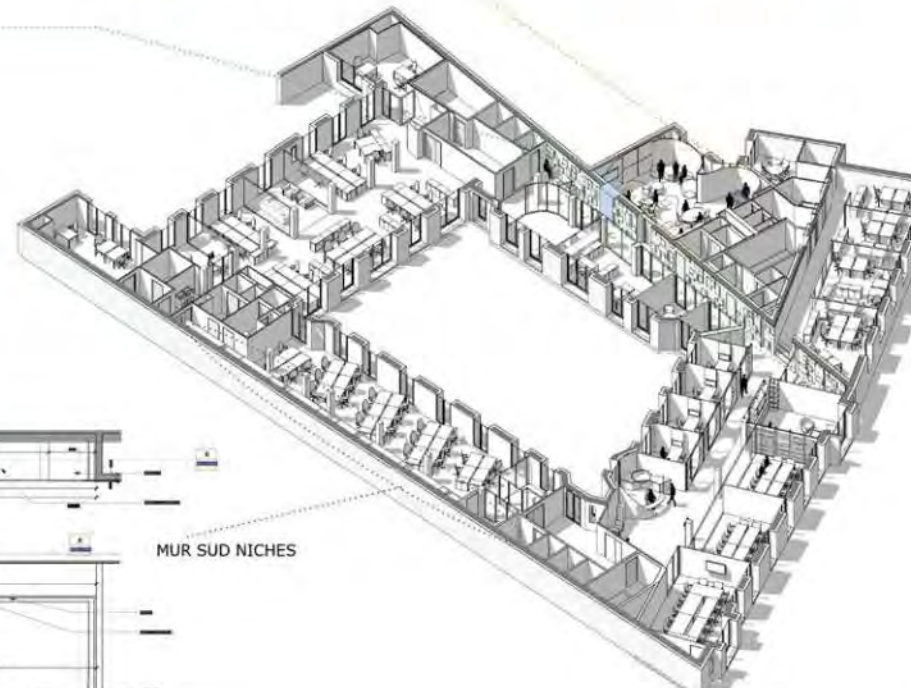
D BOITE A FLEUR EP 150mm (19 simple module 6 double module)



MUR SUD NICHES



RISTRETTO LOUNGE



VUE 3D GENERALE

## Tour Giroflées:

Residential Interior Design | Principality of Monaco

Ora-Ito | Fall 2013

The showcase apartment for Tour Giroflées, a 22-storey high-rise building in Monaco, integrates a variety of luxury living elements within the Ora-Ito design language.





## KCAT:

Kilkenny Collective for Arts Talent

Callan - Ireland | Critics Tod William and Billie Tsien

The intention of this project was to create a center for adults with special needs where they could meet as practicing artists in drama and the visual arts and stage performances for the community. The project addressed opening access to the King's River, which is the cause of destructive annual flooding and which the community has historically turned its back on. A light and transparent wood structure intersects the theatre portion of the building that is clad in local slate. In dialogue, these two forms create flexible spaces for community interaction and art studios. An existing building on Bridge Street was readapted to house four apartments in addition to gallery space, creating an important connection for the community to the arts center.



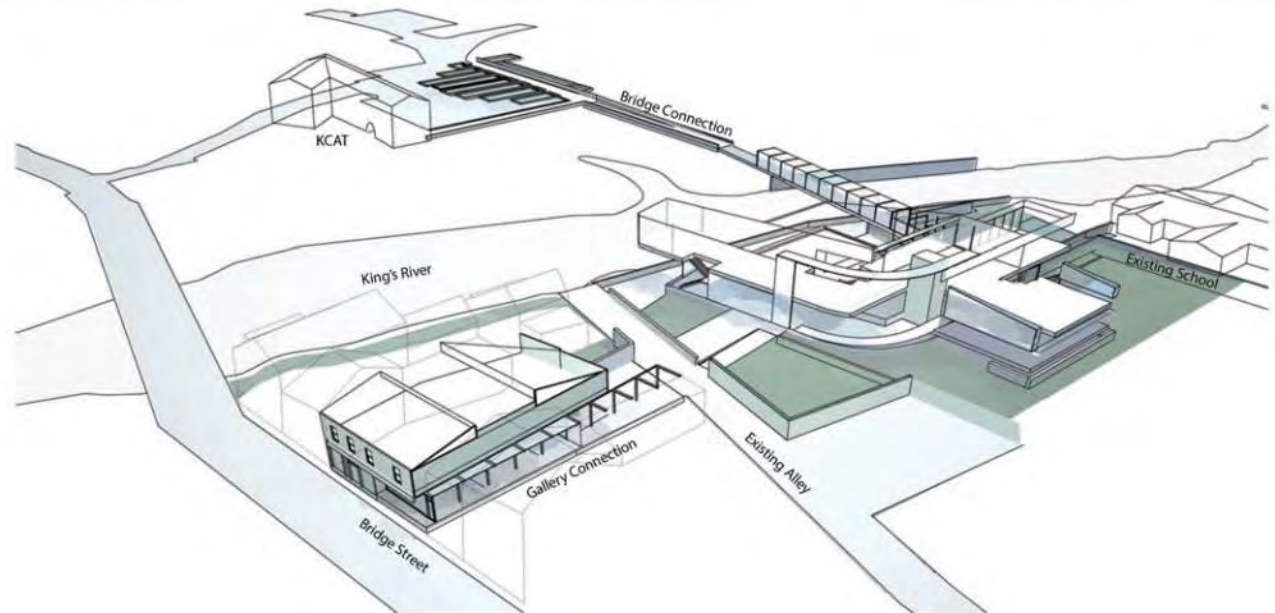
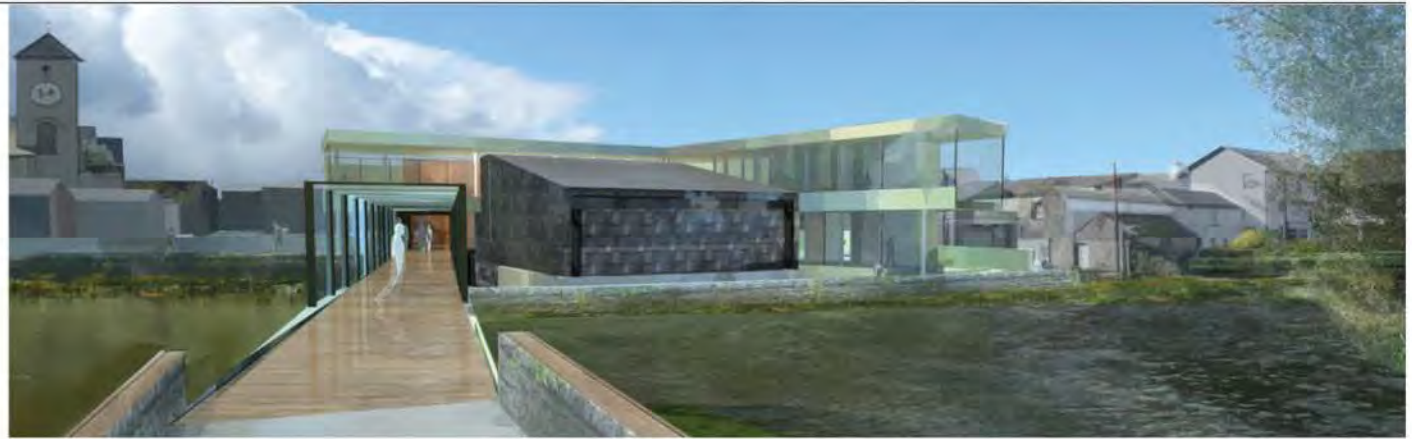
View from Bridge Street through gallery within existing shop



View of second level into KCAT rehearsal and theatre spaces



View from existing school of exterior terracing and bridge connection

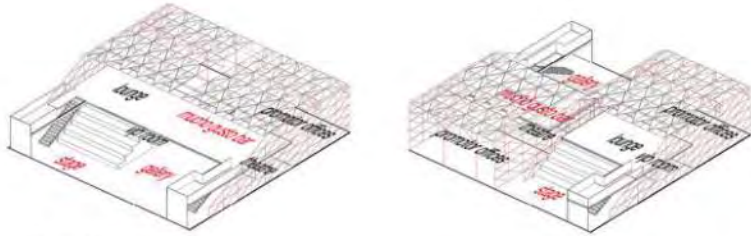




## Peru London Pavilion:

Honorable Mention for International Architecture Competition.

Proposal for a temporary pavilion promoting Peruvian culture for the World Travel Market Show.



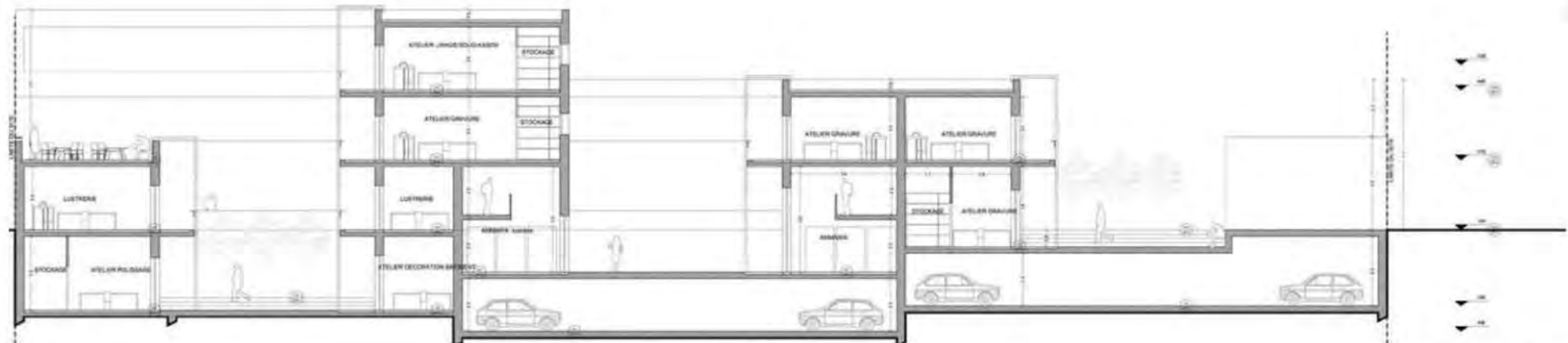
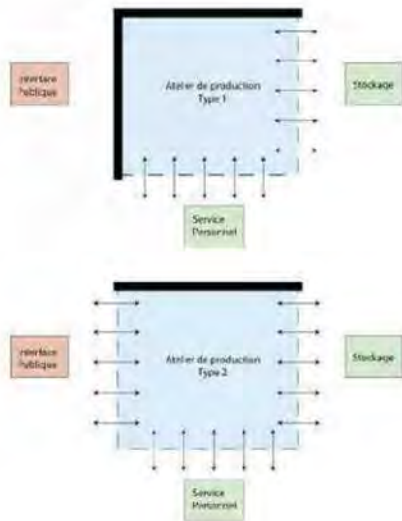
Reconfiguration:  
format square 20m x 20m



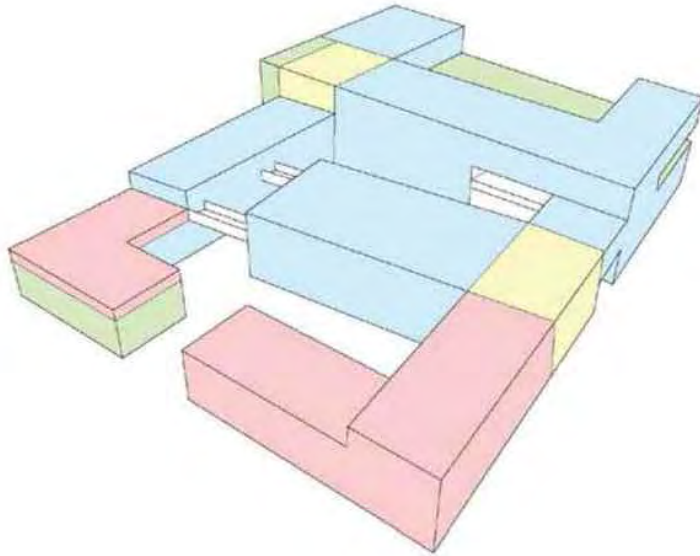
## Ain Nokbi Atelier Travailleurs du Cuivre | Fes - Maroc

Kilo Architectures | Spring 2010

The Copper Workers Atelier Complex was designed as part of the Fes Milenium Project. The worker ateliers are distributed on multiple levels surrounding three courtyards and are integrated with public programs such as a cafe and shop, allowing visitors to experience the work of the ateliers in a multifaceted and interactive manner.







- ACCUEIL / ESPACE PUBLIC
- ADMINISTRATION / ESPACE PERSONNEL
- ATELIERS
- CIRCULATION VERTICALE / EQUIPEMENT



# Qingdao Waterfront:

Seashore Art Promenade | Jinan - Shandong

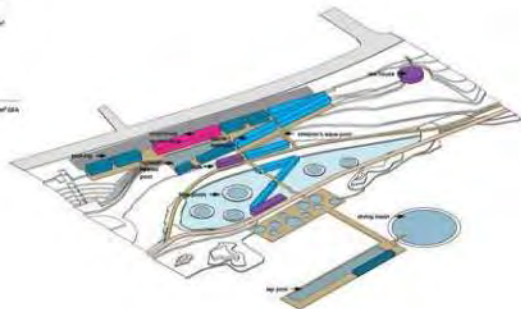
Atelier Seraji | Spring 2012

The 1.7 km site between the ocean center and the Hyatt Hotel presents the possibility to plan a sequence of programs with various spaces, bringing people of the city of Qingdao to experience the waterfront. The main idea the proposal is based on Four: scales, programs, temporalities, seasons, and economies as they relate to establishing a vibrant waterfront.

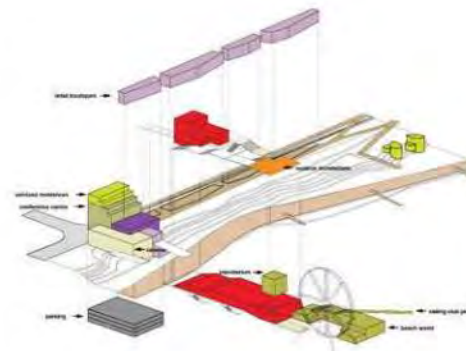
## LAGOON • SCULPTURE GARDEN • PIER • ART CENTER • HOTEL



Hotel / Boutique	475 m²
Bar / Restaurant	500 m²
Therapy / Spa	1 700 m²
Service Apartment	1 400 m²
Total Water Front	1 700 m²
Permanent Pool	700 m²
Boardwalk	
Esplanade	
Parking	
<b>TOTAL</b>	<b>6 270 m² GFA</b>



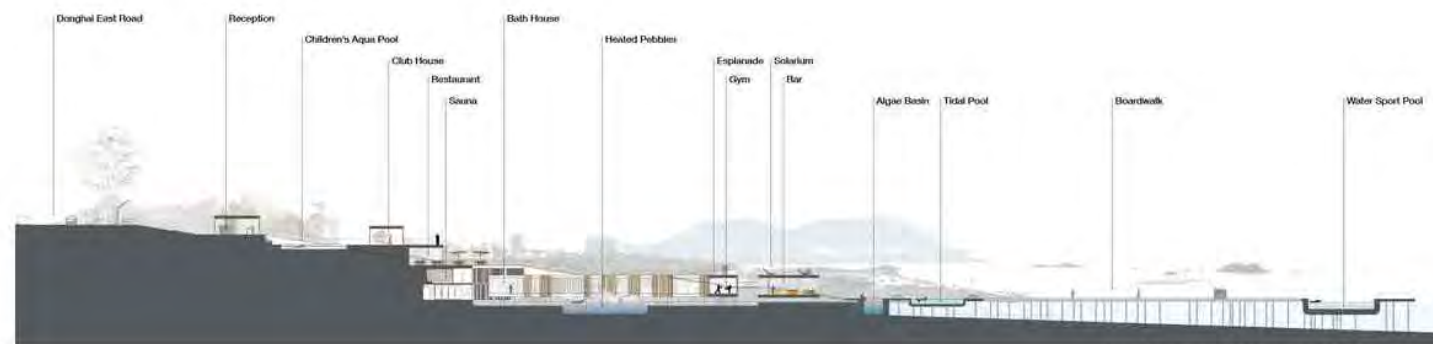
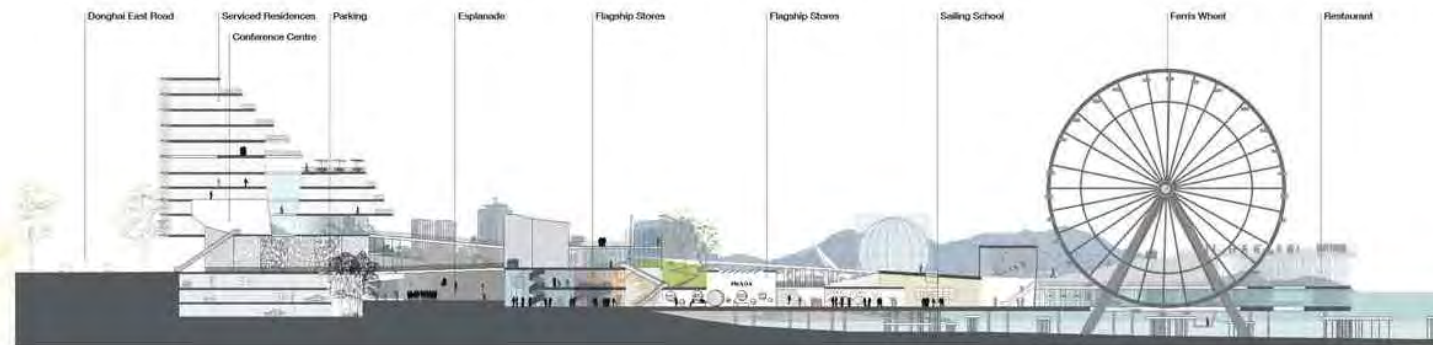
Flagship Store	2 300 m²
Hotel / Boutique	1 000 m²
Bar / Restaurant	2 000 m²
Service Apartment	1 000 m²
Conference Center	2 000 m²
Golfing Center	1 000 m²
Performance Space	700 m²
Esplanade	
Parking	
<b>TOTAL</b>	<b>12 100 m² GFA</b>



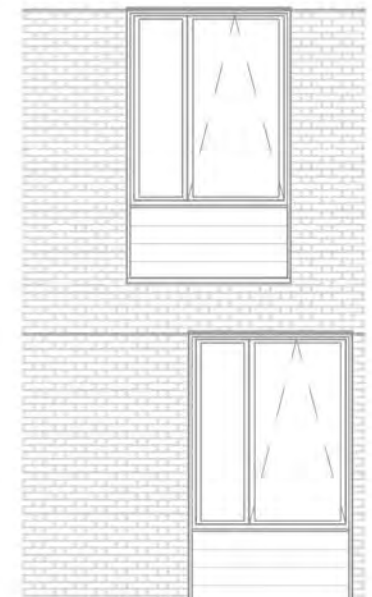
Gallery	7 000 m² (Planned)
Art Development	7 000 m² (Planned)
Art Residency	2 000 m² (Planned)
Hotel / Boutique	5 000 m²
Street Market	
Bar / Restaurant	2 000 m²
Botanical Gardens	
Greenhouse	1 000 m² (Planned)
Boardwalk	
Esplanade	
Parking	
<b>TOTAL</b>	<b>32 000 m² GFA</b> (18 000 m² reserved)



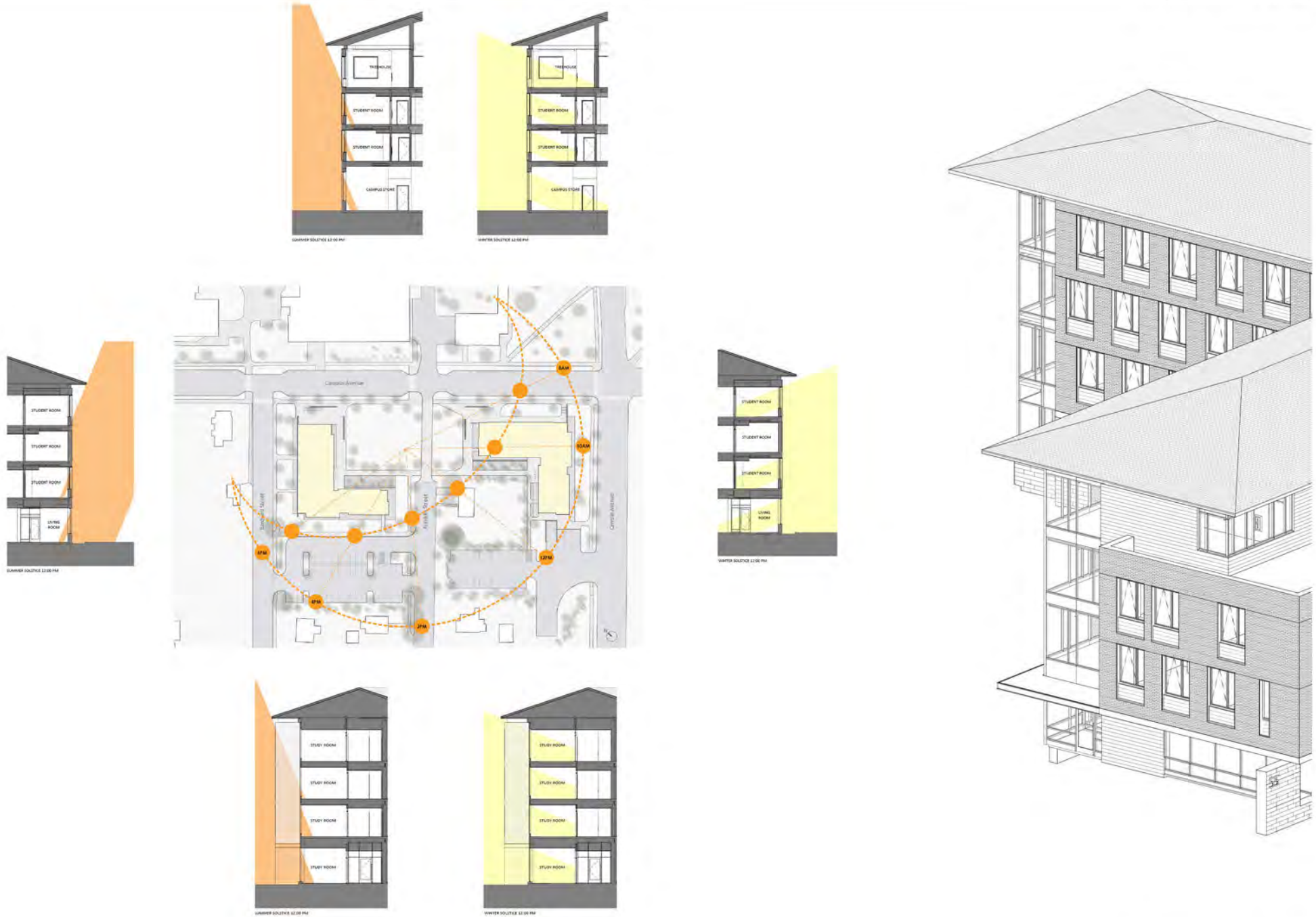


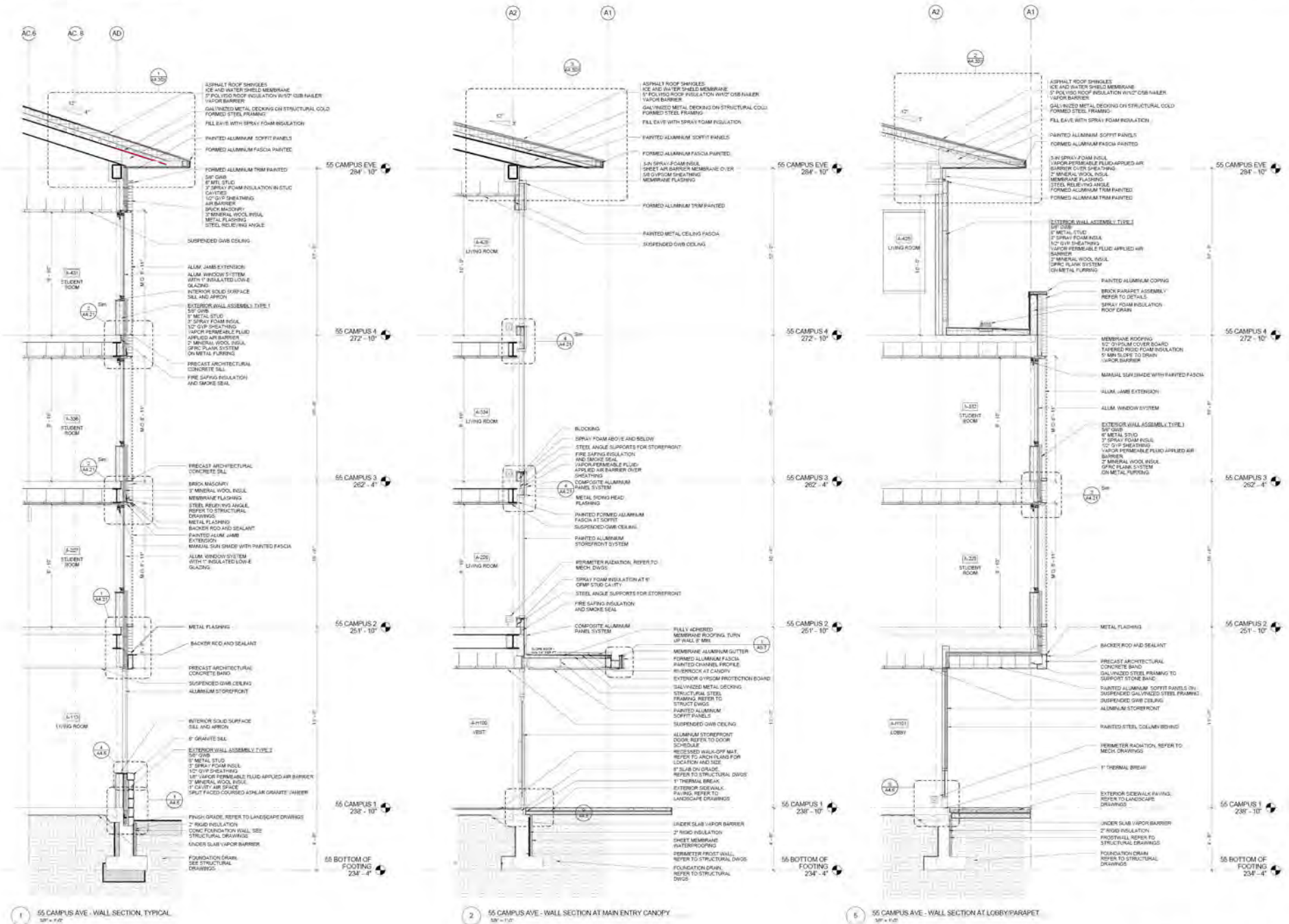


55 & 65 Campus Avenue Housing designed for Bates College in Lewiston Maine provides 400 bedrooms and a mixture of common student spaces including a retail component on the first level of Campus 65 Avenue. The material palette consists of Flemish brick, granite, and precast concrete paneling, creating a contemporary interpretation of the Bates College academic vernacular.

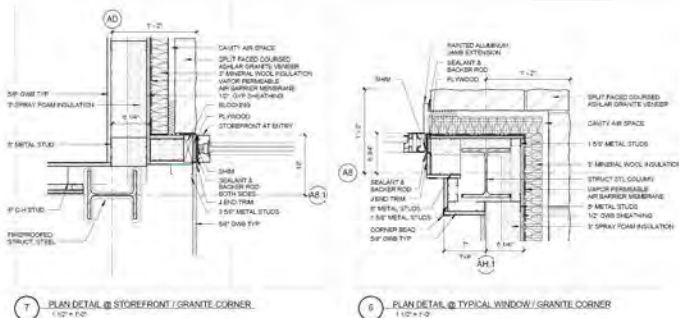




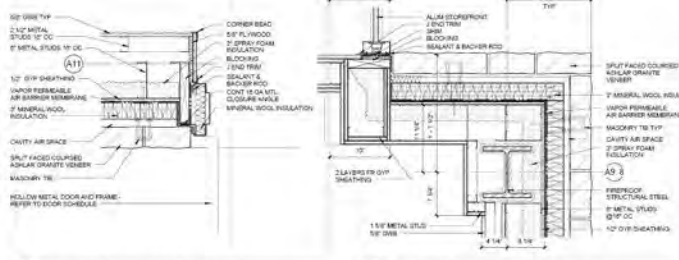




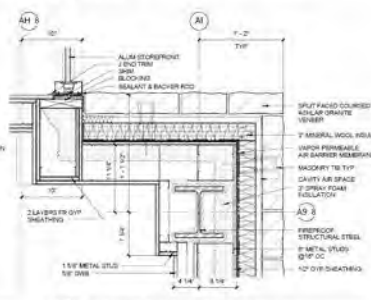




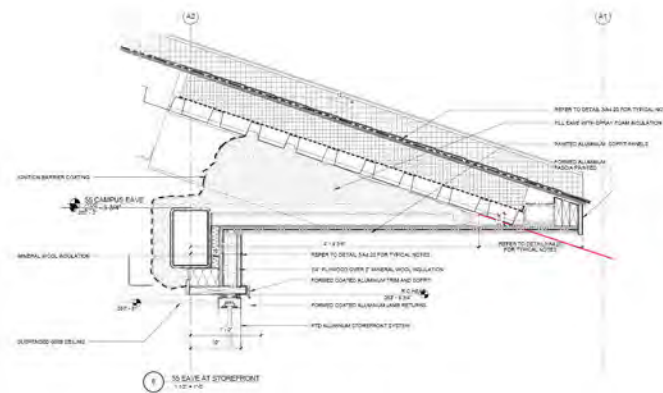
7 PLAN DETAIL @ STOREFRONT / GRANITE CORNER  
1'-0\"/>



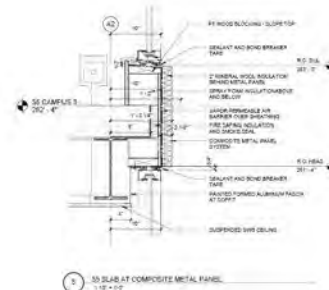
2 PLAN DETAIL @ TYP. EXT. DOOR JAMB / GRANITE  
1'-0\"/>



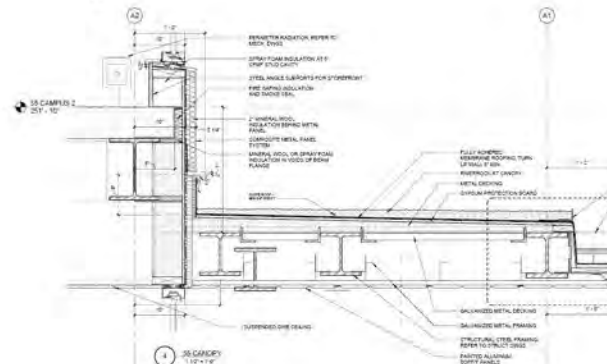
1 PLAN DETAIL @ STOREFRONT / GRANITE COLUMN  
1'-0\"/>



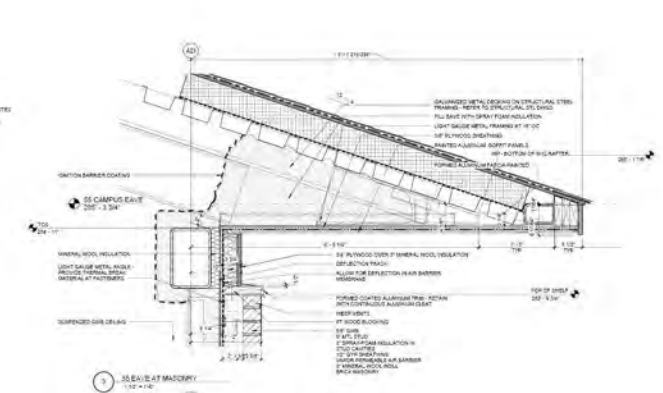
3 SLAB DETAIL @ STOREFRONT  
1'-0\"/>



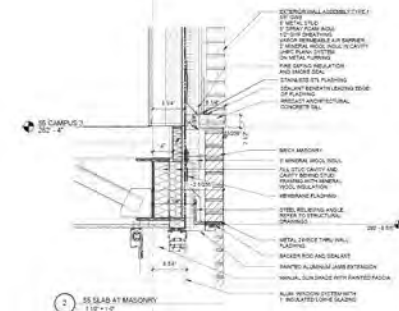
5 SLAB DETAIL @ COMPOSITE METAL PANEL  
1'-0\"/>



4 CANOPY  
1'-0\"/>



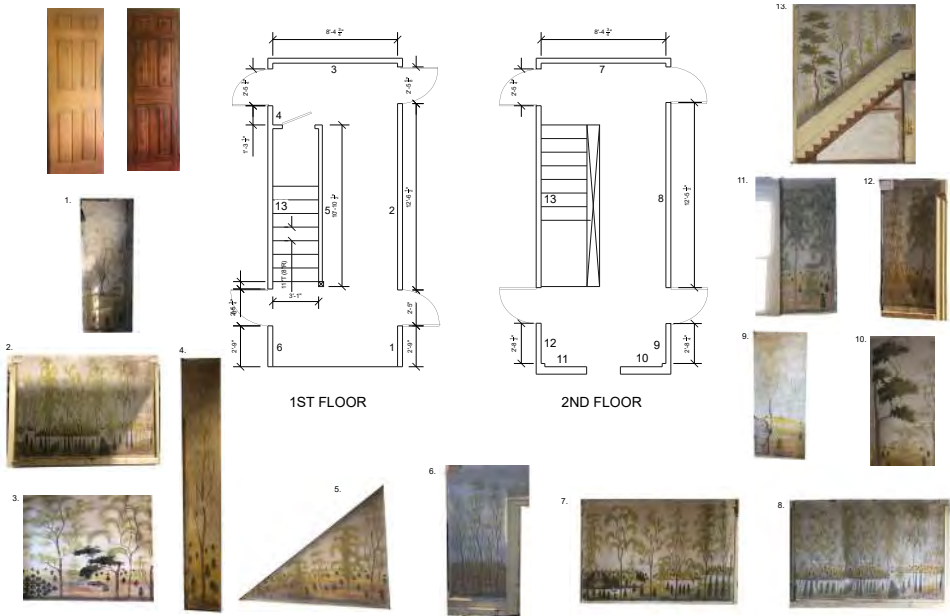
3 SLAB DETAIL @ MASONRY  
1'-0\"/>



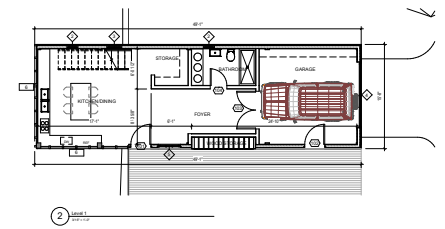
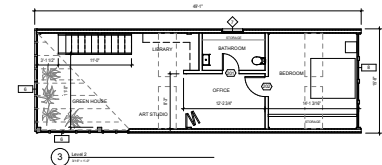
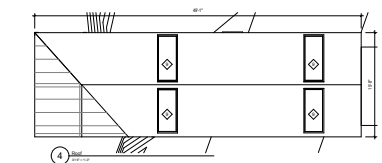
5 SLAB DETAIL @ MASONRY  
1'-0\"/>



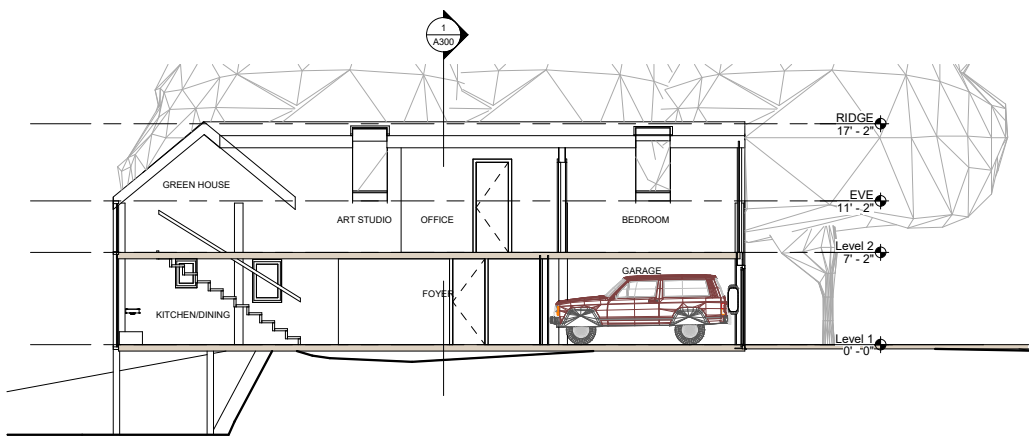
3 SLAB DETAIL @ MASONRY WITH BAND  
1'-0\"/>

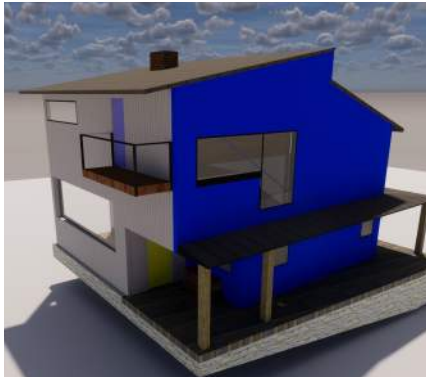
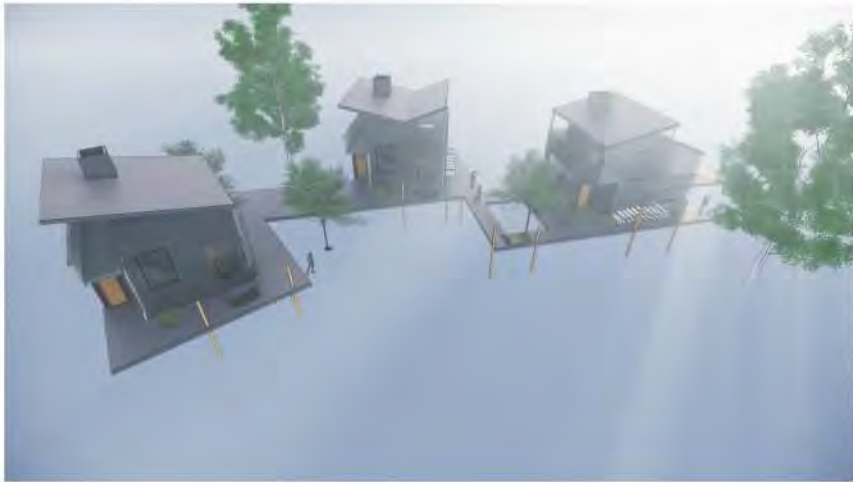
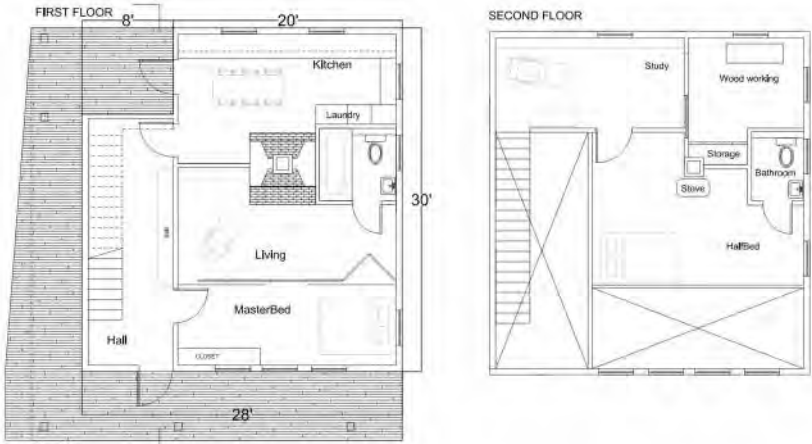






FLOOR PLANS  
COFFIN HOUSE, 24 MOUNT DELIGHT RD DEERFIELD, NH  
06.11.00, 3'x6" = 1"=1"







The on going project is taking place in a difficult narrow space beside a local shelter for women in the middle of a highly urban district.

A series of small gestures that gives life to the site and transform the ordinary into a space that is delightful and invites many types of use.

At one end, new set of cabinets conceal the trash collection barrels and creates a shelter for a table. Sun can be controlled by means of a retractable canopy, generating a variety of solar and thermodynamic effects with simple gestures that are controlled by the users.

Deeper into the garden, an awkward slope is relieved and becomes the spot for alcoves and quiet. Different types of shade present themselves as the sun moves during the day, allowing the residents a variety of types of comfort depending on their moods.

For low maintenance, simple plantings of grass, a sumac tree, and potted ivy - creating a lush and luxurious space but with an economy of means and entirely with donated materials. The budget for this project is effectively zero - a gift to an important local institution.

